

## Guidelines for presentation in Research committee

**Title:** Should be precise and informative and preferably reflect PICOS (Interventional study)/PECOS (Exposure in Observational study) from the research question.

- **P**atient Problem, (or Population)
- **I**ntervention / **E**xposure
- **C**omparison or Control, and
- **O**utcome
- **S**tudy Design (Optional)

For more info: <https://canberra.libguides.com/c.php?g=599346&p=4149722>

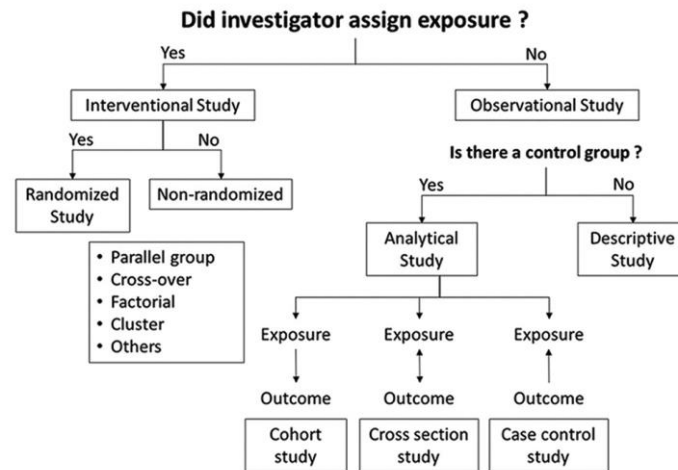
**Background and Need for the study:** 3 + 2 sentences

**Objective:**

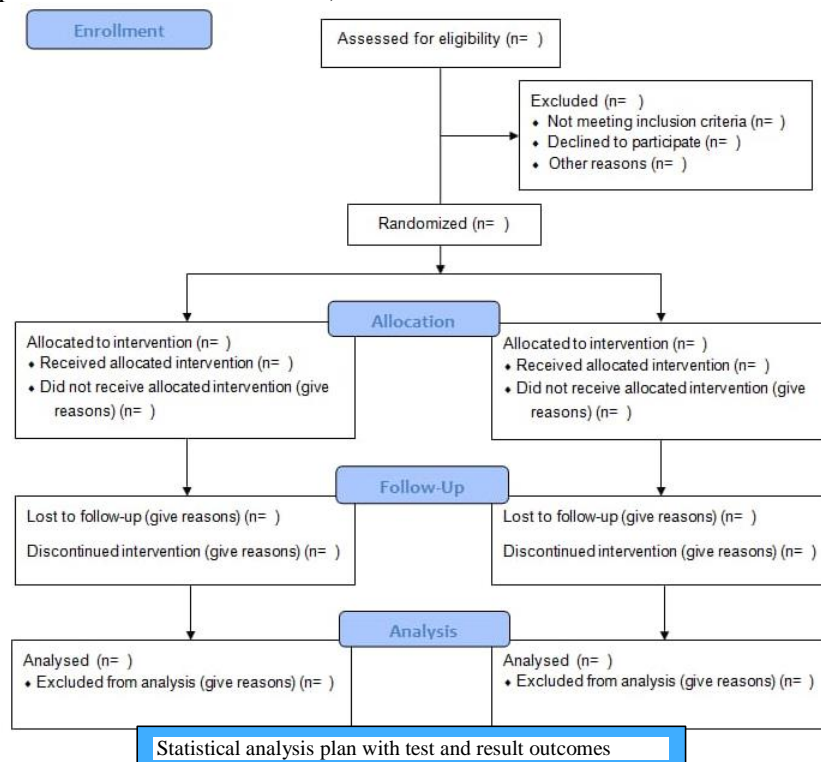
- Shall be crisp and clear with operational verbs

**Methodology:**

1. **Study Design:** (Choose from below diagram; if others specify)



2. **Study Setting:** Hospital and place of approaching patient (community).
3. **Study Subjects:** Should be specific (e.g. Outpatient attending the OPD of Surgery.)
  - a. Inclusion criteria:
  - b. Exclusion criteria:
4. **Study duration:** .....years ..... months.
5. **Sample size:** Number. Calculation of sample size.
6. **Study process flowchart:** Consent, Screening, recruitment, randomization, blinding, Data collection, Data processing and Data Analysis by statistical methods (preferably depicted by Flow chart than paragraph including statistical analysis plan. Below is a Sample flowchart for illustration)



7. **References:** in Vancouver Style